



the sun secret

COLLECTION

Villa Adele, Sardinia, Italy



7 + 1



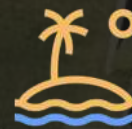
13



550 m²



7000 m²



PRIVATE
ACCESS

The property has 550 m2 living space, is built on a single level: the right wing building, and left wing building joined by a patio with a large panoramic terrace overlooking the Sea where guests can dine enjoying the Mediterranean Sea breeze and an incredible 270 degrees view of Porto Rotondo, the Island of Mortorio and the Cala di Volpe Bay.

The new magnificent 20x5m HEATED (optional) SEA WATER SWIMMING POOL and the private access to a very secluded beach directly in front of the property makes it the PREMIUM CHOICE of the entire Costa Smeralda according to the teNeues book BOOK "BEST PLACES TO RENT ON THE PLANET"

The PRIVAT DOCK, a very rare feature on the Costa Smeralda, is extremely practical for boat transport (can be easily organised) to the Cala di Volpe, Pitrizza and Romazzino Hotels, Porto Cervo and Porto Rotondo marinas with their exciting shopping and glamorous Costa Smeralda night life!

The Owner recently improve the magnificent structure of the Villa adding an independent Junior Suite located on the TOP of the Villa, just near buy the fitness area. The Junior Suite can guarantee the guest an incredible privacy and an astonishing view looking the sunrise.



Bar Area



Butler



WIFI



Garden



Cinema Room



Gym



Outdoor Pool



INCLUDED SERVICES

- Daily cleaning (Sundays off)
- Linen and pool towels
- Luxury bath products on arrival
- Concierge service
- Pool Heating

MULTIMEDIA

- Cinema Screen
- Wi-Fi
- SKY TV
- Apple TV
- House PC with AirPrint
- New Bose LS System inside and outside the villa

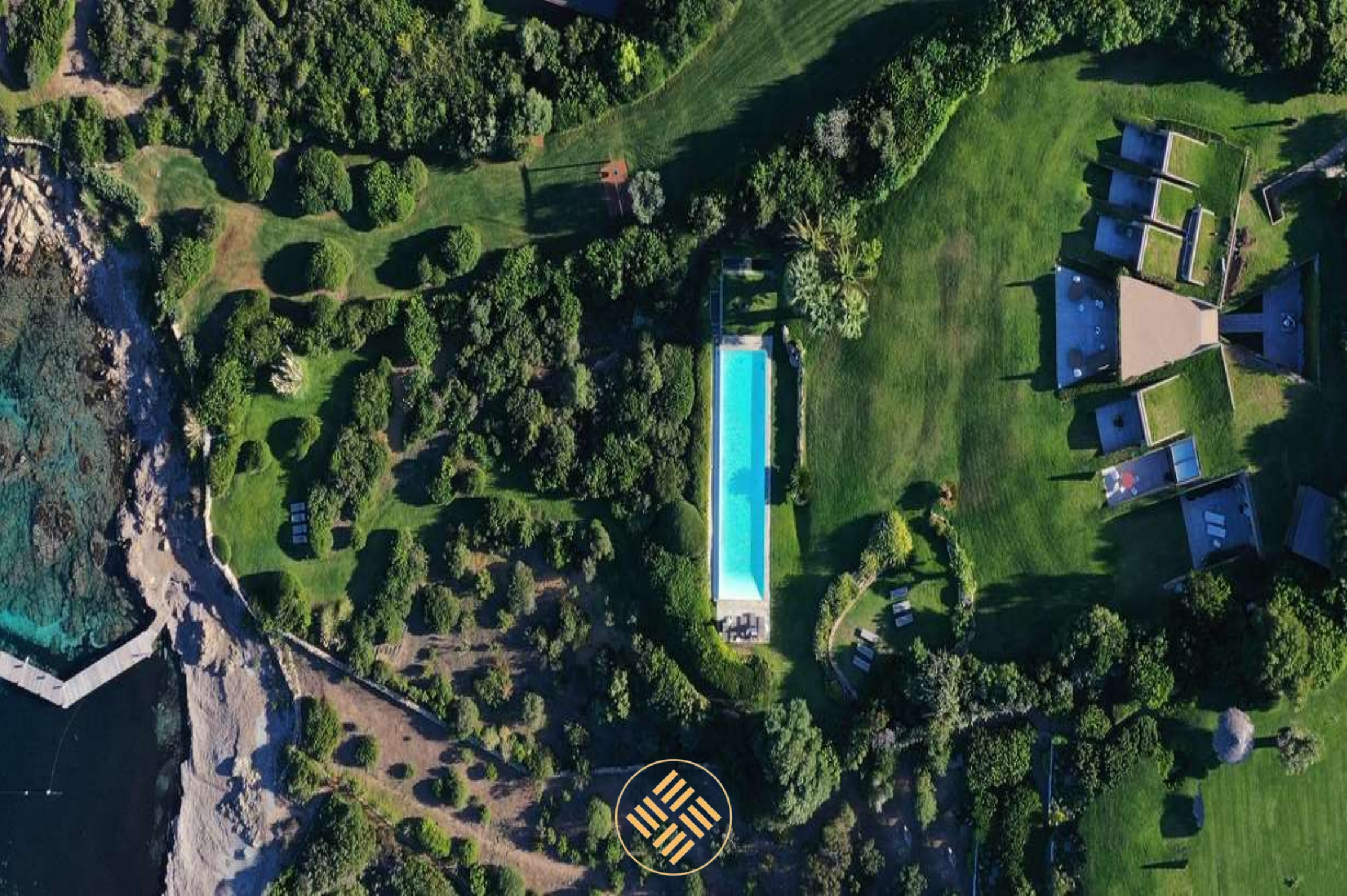
ADDITIONAL FEES

- Airport transfers from your residence
- 4x4 Luxury SUV or vehicle
- Private Jets flights or flights assistance
- Yacht Charter
- Private chef and Butler
- Massage and beauty treatments
- Sports and leisure activities
- Child care
- Security Services
- Almost anything you can wish for











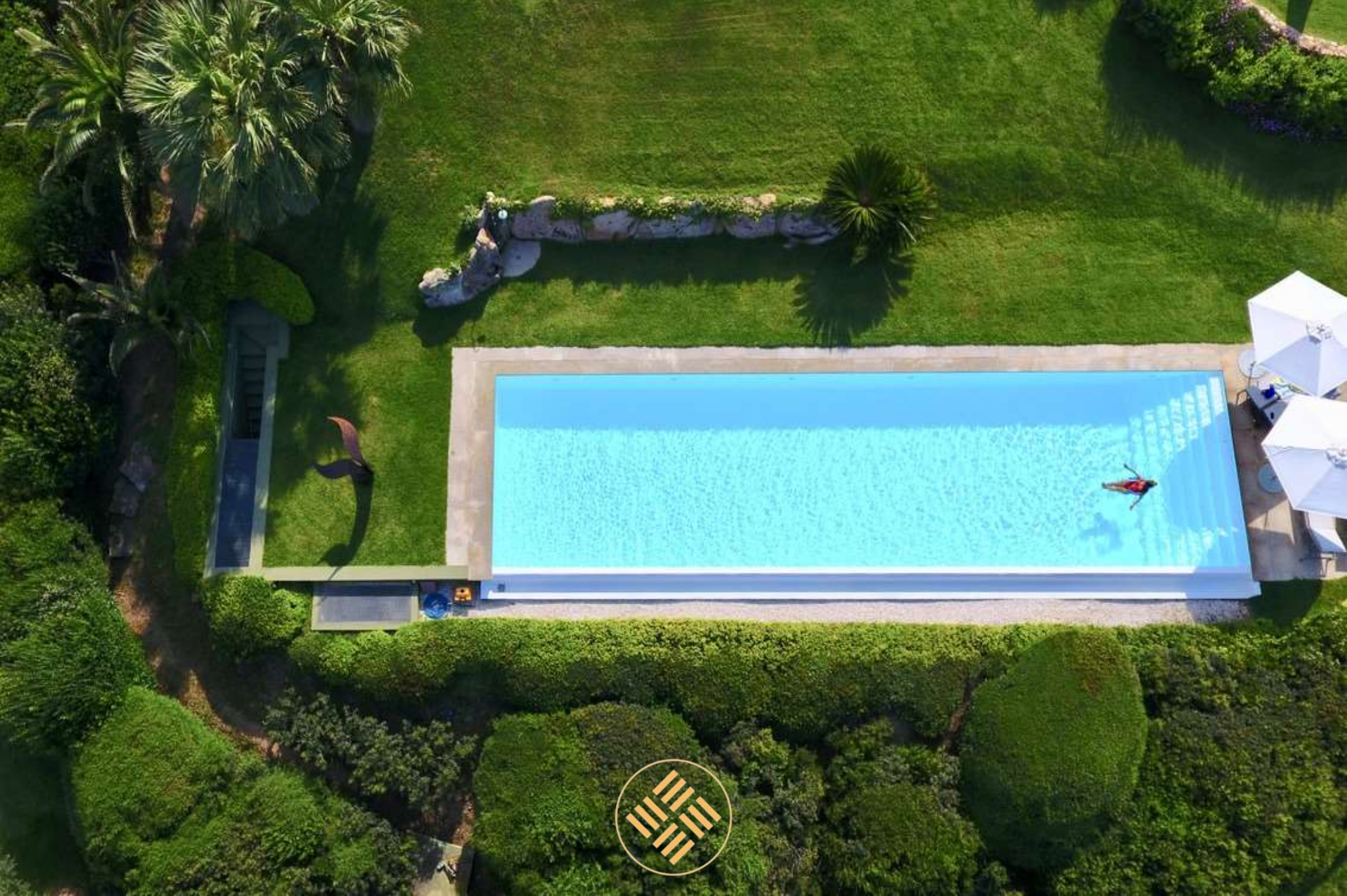
























































































Porto Cervo: 20 minutes
by car



Olbia Airport: 25 minutes
by car

